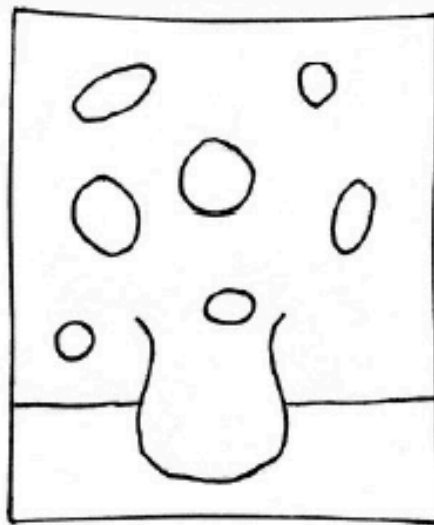
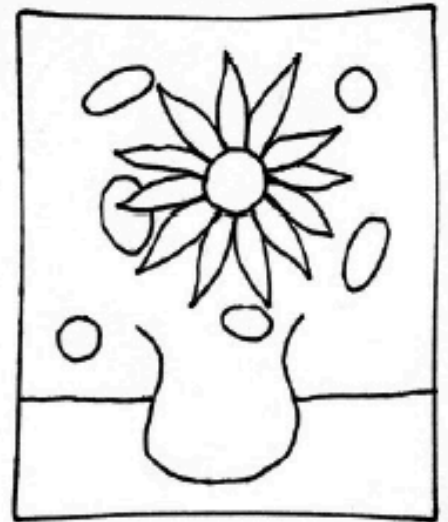


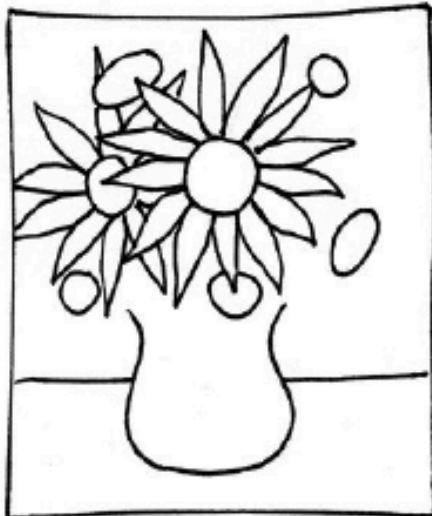
1. Draw a vase near the bottom of the page. Be sure not to touch the bottom. Don't draw the top yet.



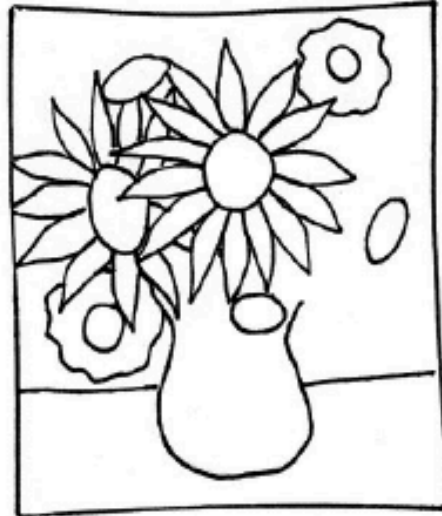
2. Draw a big circle above the opening of the vase. This is your dominant flower. Draw circles and ovals around the dominant flower. Add a table line.



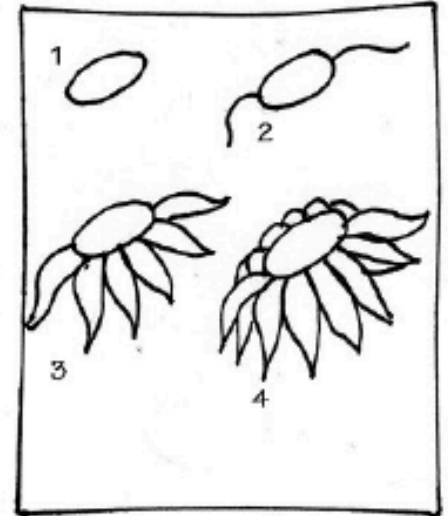
3. On your dominant flower, add petals. Don't worry if you draw over another flower center...you're suppose to!



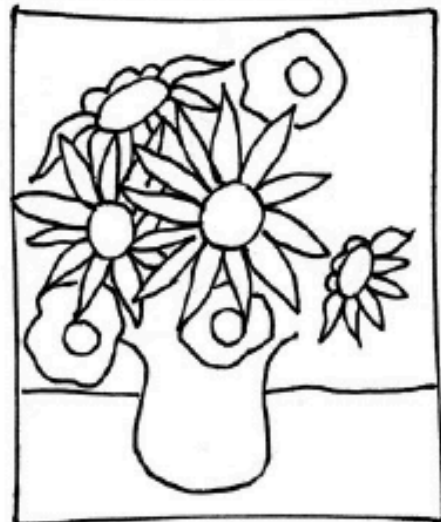
4. Draw petals on another center. If you go off the page, great! This time, see if you can hide the petals behind the big flower.



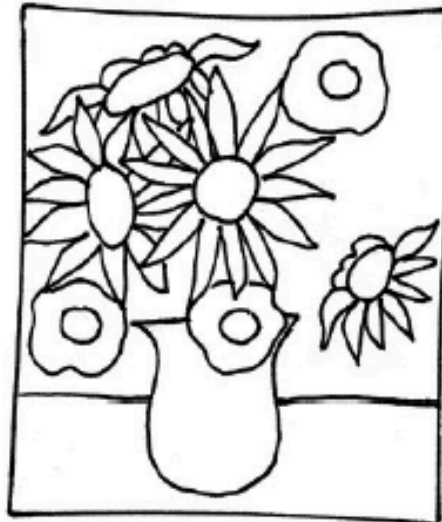
5. Add more petals, this time trying different shapes and sizes.



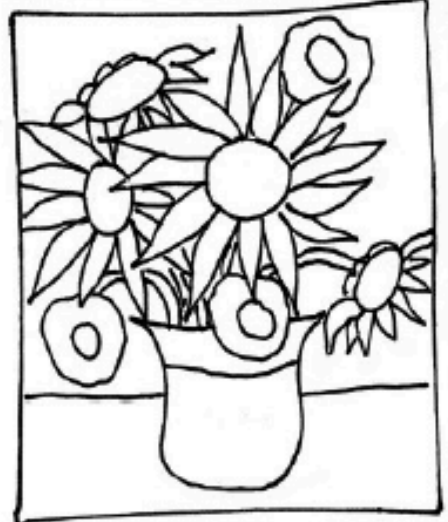
*To draw a side-ways flower, start with a squished oval and add tails on either end. Turn the tails into petals.



6. Continue to draw petals, tucking them all behind the dominant flower.



7. Draw a line to close of the vase opening. It might run into a flower, so be sure to "jump" over the flower.



8. Finally, add stems and perhaps decorate your vase with simple lines.

HOW TO DRAW VAN GOGH SUNFLOWERS